



Delvcam

DELV-8LCD-SDI



1RU Rackmount 8-LCD 3G-SDI Video Monitor

IMPORTANT SAFETY INSTRUCTIONS

- Read manual before using this product.
- Keep manual for future reference.
- Do not place the display screen on the ground.
- Avoid heavy impact or dropping.
- Do NOT use chemical solutions to clean this product.
Wipe with a clean soft cloth to maintain the brightness of the surface.
- Do not block any vent holes.
- Follow the instructions when making adjustments.
- Unplug the power and/or remove the battery if you do not plan to use the monitor for an extended period of time.

FEATURES

8 Display Screens in a 1RU Monitor

Supports up to 1920x1080

Multiple Features

Equalization, Reclocking, UMD Character Function, Looping Output, RS422 Remote Control

Embedded Audio Meters & Linear Time Codes

Activated with DIP switches for each monitor

Computer Interface

Control functions such as brightness, contrast, UMD, audio level meter, and time code for each monitor

INCLUDED ACCESSORIES

- 15VDC/2.5A Power Adapter
- Power Cord



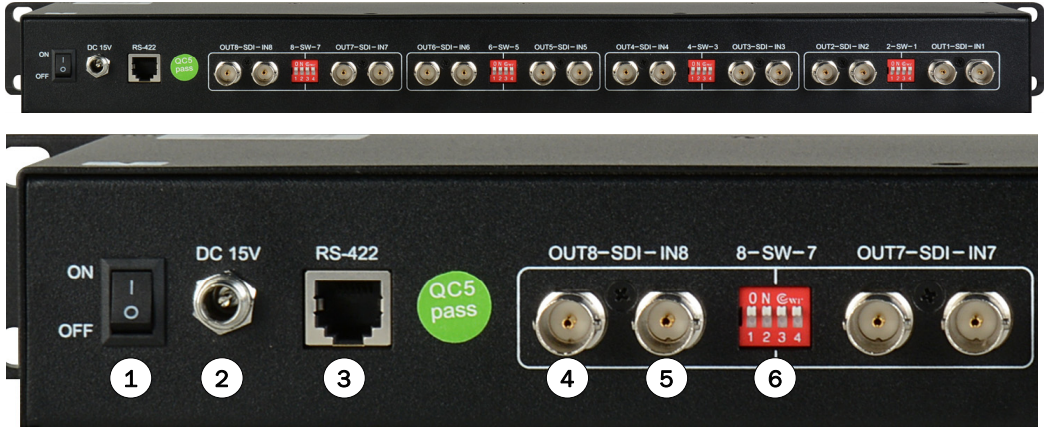
SPECIFICATIONS

Display Screen:	2 inch LCD, LED backlight
Resolution:	supports up to 1920x1080 , 640 x 240 native resolution
Brightness:	250cd/m ²
Aspect Ratio:	4:3
Contrast	300:1
Viewing Angle:	80° / 70° (H/V)
Input Signal:	3G-SDI
Output Signal:	3G-SDI
Remote Control:	RS422
HDMI Formats:	Full HD-HD 1080p, 1080i, 720p, 576p, 576i, 480p, 486i
SDI Formats:	
SMPTE-125M	480i(59.94),1080i(60/59.94/50)1080p (30/29.97/25/24/24sF/23.98/23.98sF (60/59.94/50/30/29.97/25/24/23.98)
SMPTE-292M	1080p(30/29.97/25/24/24sF/23.98/23.98sF)
SMPTE-296M	720p(60/59.94/50/30/29/25/24/23.98)
SMPTE-372M	720p(60/59.94/50),1080i(29.97/25/24/23.98), 1080p
SMPTE-425M-AB	1080p(60/59.94/50)
Level A & Level B	720p(60/59.94/50/30/29.97/25/24/23.98)
Level B 2X	1080i(60/59.94/50)
ITU-R BT	656:576i(50)
Audio:	Embedded Audio Meter per screen
Input Voltage:	12-24VDC
Current:	15VDC/2.5A
Power Consumption:	23W
Dimensions (LxHxD):	19 x 4.13 x 1.73 in
Weight:	3.43 lb

FRONT

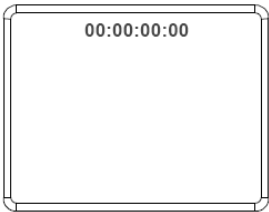


REAR

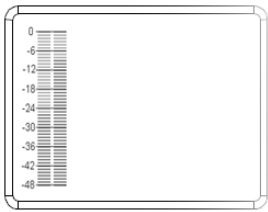


- 1 Power Off/On
- 2 15VDC Power Jack
- 3 RS422 Input for Computer Interface
- 4 SDI Output
- 5 SDI Input
- 6 DIP Switches: Up = ON
 - 1 Time Code—Controls monitors to the left of Switch
 - 2 Audio Level Meter —Controls monitors to the left of Switch
 - 3 Time Code—Controls monitors to the right of Switch
 - 4 Audio Level Meter—Controls monitors to the right of Switch

Time Code*: Switches 1&3



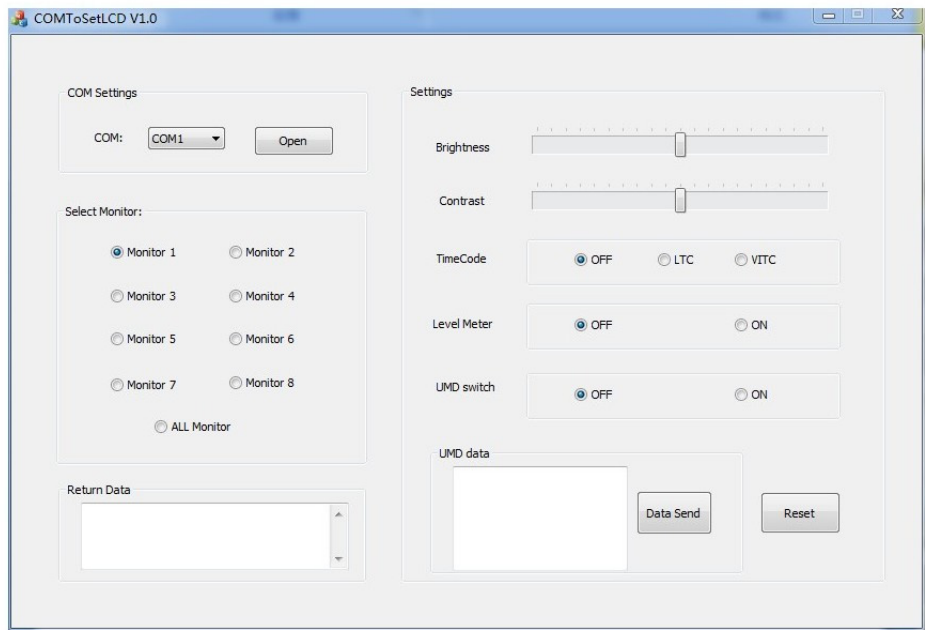
Audio Level Meter: Switches 2&4



* Timecodes are preconfigured for LTC. If you need to change to VITC, use the computer interface.

SOFTWARE INTERFACE OPERATION

- 1. In COM Settings, select the hardware connection and click OPEN to open the serial port.
- 2. Choose a monitor under Select Monitor. Select one or all.
- 3. Set functions: Brightness, Contrast, Time Code, Level Meter, and UMD.
- 4. UMD Data: Enter no more than 32 characters. Click Data Send to display the characters. Default settings are the numbers 1 through 8.
- 5. The interface operation overrides dipswitch settings for audio level meters and time codes.



TROUBLE SHOOTING

No Image

- Ensure that the cables are properly connected.
- Use the standard power adapter that is included as improper voltage input may cause damage or injury.